

the latest

news from maven veterinary care

maven
veterinary
care
expertly done.



Firework Fright!

We hope this finds you well and surviving the current pandemic. Whilst so much has changed in our lives over the past few months, it is still likely that fireworks will



continue to plague the lives of many pets.

With this in mind, we have put together some tips to keep your pets safe and well at this time of year.

Firstly, try to make sure all pets are inside well before darkness falls. Lock the cat flap and take dogs on a good walk during the day to tire them out. Also – if you have any outdoor pets (such as pet rabbits or guinea pigs), make sure you cover their cages with a thick blanket to muffle the noise, and provide lots of bedding.



Making a den is an excellent idea for dogs. Any small space will do – cover it

over, put their bed inside, add a few treats and encourage them to rest in it. Also, putting the TV on and closing the curtains will disguise the sounds and will help to make things seem as 'normal' as possible.

Many stressed pets will benefit from calming supplements, or anti-anxiety pheromones (Adaptil for dogs and Feliway for cats). These both provide a gentle, but effective, way to help them relax. These should be started at least 48 hours before fireworks are due to start. For the more severely affected, sedatives may also be required.

Noise desensitisation programmes are available free on the Dogs Trust website and these can be effective if started well in advance.

For stressed pets, get in touch and talk to us about how we can help!

Parasites: Don't get caught on the hop!



Although we will doubtless be battling the effects of Covid-19 for some considerable time, it's worth remembering that the parasites that can make our pet's lives a misery have not been on lockdown and have been merrily breeding in the warmer summer months. With Autumn now upon us, we take a look at two of the biggest offenders and what you can do to protect your pet *and* your home!

Fleas love the warm weather, and in addition to your home, they thrive outside in parks and gardens. Here, any dormant flea eggs from last year will rapidly hatch out into adult fleas. These hop onto passing pets, bringing dozens of these tiny pests back into your home. Adult fleas feed on your pet's blood, causing a range of problems including itchy skin, rashes and hair loss.



Worse still, they hop off our pets and make their home in pet beds, carpets and soft furnishings, where the flea life-cycle is perpetuated.

The best way to prevent fleas is year-round treatment for all your pets with veterinary-licensed flea products. These are extremely effective at killing fleas and they kill them *before* they lay their eggs, thus preventing house infestations. Some work even before they bite (vital for sensitive pets) and some can have an effect on the environment as well. Many veterinary spot-ons are multipurpose and will kill other parasites including scabies, ear mites, ticks and worms. Our staff are able to recommend the best treatments for your pets.

Ticks are another seasonal problem. As the summer turns into the Autumn, so tick numbers are at their highest. Ticks live in long grass and woodlands, waiting to attach themselves to passing pets, and feeding off their blood for several days. Unlike fleas, ticks are not itchy, but can spread a range of diseases. These are discussed in further detail below this article.

The good news is that current evidence suggests that tick-borne diseases take many hours after tick attachment to be transmitted. Using a product that rapidly kills or repels ticks will help to reduce the risk of these diseases. No tick product is 100% effective however, so pets should also be checked for ticks every 12-24 hours and, any found, removed with a special tick remover.

If you would like further information on flea and tick prevention, or parasite prevention more generally, please ask a member of our practice team – we are happy to help.

Checking for fleas



Whilst it is often difficult to find live fleas, specks of flea "dirt" (faeces) in the coat points to a flea problem.

Removing ticks

Attached ticks with buried mouthparts are often found whilst grooming your pets.



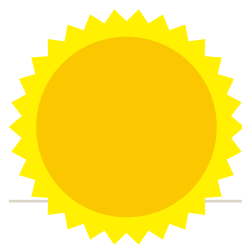
Ticks are best removed with a specially designed tick hook with a twisting action.



Bank Holiday Opening Times!



We hope you won't need to visit us over the August Bank Holiday period with your poorly pets, but if you do, we are here. Contact us as normal on **0208 337 2214** and you will be able to speak to one our Maven Team, or, if we are closed, our out-of-hours emergency provider Vets Now.



Bank Holiday Opening Times!

Saturday 29th and Sunday 30th August:

Open normal hours; 9am-4pm Saturday and 10am-2pm Sunday

Monday 31st August: We are closed.

An emergency service will be running with Vets Now.

Normal opening hours will resume from Tuesday

Our opening hours

Monday – Friday 8am-8pm

Saturday 9am-4pm

Sunday 10am-2pm

In an Emergency day or night – call us on 0208 337 2214

www.mavenvets.co.uk

like us on facebook

www.facebook.com/mavenvets



609-613 London Road, North Cheam, Surrey, SM3 9DF

Autumn hazards!



Toxins: Around the house and garden, keep a wary eye out for toxins at this time of year. Pets are very attracted to

ethylene glycol (antifreeze) which is easily spilt

when topping up car radiators. It is

very sweet tasting and extremely toxic to pets, causing kidney failure and often death. In the garden, try to ensure pets don't eat **fermenting apples** and also **conkers** – both of which can lead to quite severe digestive upsets.



Snails: Also try to stop your dog eating the last of the **slugs and snails** in the garden, since these can spread the lungworm *Angiostrongylus vasorum*.



Seasonal Canine Illness is a rare, but serious, condition and is most commonly diagnosed between August and November. The cause is unknown but affected dogs become very poorly with sickness and diarrhoea soon after walking in woodland. Please get in touch at once if your pet develops any symptoms resembling this rare condition.

Finally, enjoy the Autumn and take care!

As we get out and about more in the wake of the Covid-19 crisis, it's worth being aware of the range of Autumn hazards faced by our pets. With this in mind, here are a few topical tips:

Pesky parasites: We have covered fleas and ticks elsewhere in this newsletter, but another important

parasite to be aware of are **Harvest Mites**, which are a problem in the late-summer and Autumn. These very seasonal parasites are picked up in woodland and long grasses and

swarm onto passing pets where they tend to congregate on the ears, eyelids, feet and the underside of the abdomen.

They are identified as tiny bright orange dots adhering tightly to the skin and are usually a cause of great irritation with itchy, crusting lesions developing.

So – make sure you regularly check your pet's coat for any

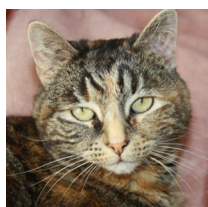
signs of parasites and let us advise you on the best treatments for your pet.



The bright orange mites often cluster together and are commonly found between the toes



Harvest mite down the microscope



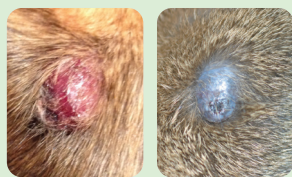
Lump alert!

Lumps and bumps come in a variety of shapes and sizes and can be picked up by regular grooming (also excellent for looking for fleas, ticks and other parasites!). If you notice a skin lump, it's important to get in touch so we can assess it.

Lumps can have several underlying causes including: allergic reactions (such as insect bites), abscesses, hernias (often seen in younger pets) and tumours.

Tumours are understandably the most worrying and are either benign (tend to be slow growing and stay in one place), or malignant (which are often fast growing and can spread).

As with many conditions, speed is of the essence and a delay in starting the appropriate treatment can be the difference between a small treatable mass and a much larger one which is harder to deal with.



Skin lump on a dog Skin lump on a cat

Lumps may vary considerably in appearance. Some are fairly obvious (such as the photos above), whilst others are much harder to detect.

Maven Health Care Club



Take the stress and expense out of looking after your pet.

Joining the club allows you to spread the cost of your pet's essential healthcare and provides peace of mind that they have everything they need to keep them healthy, when they need it.

- ✓ Discounted essential annual vaccination and full health check up with a vet.
- ✓ Discounted worm control for the year.
- ✓ Discounted flea control for the year.
- ✓ Six-monthly health checks.

For more information on our Health Care Club Call us on **0208 337 2214**